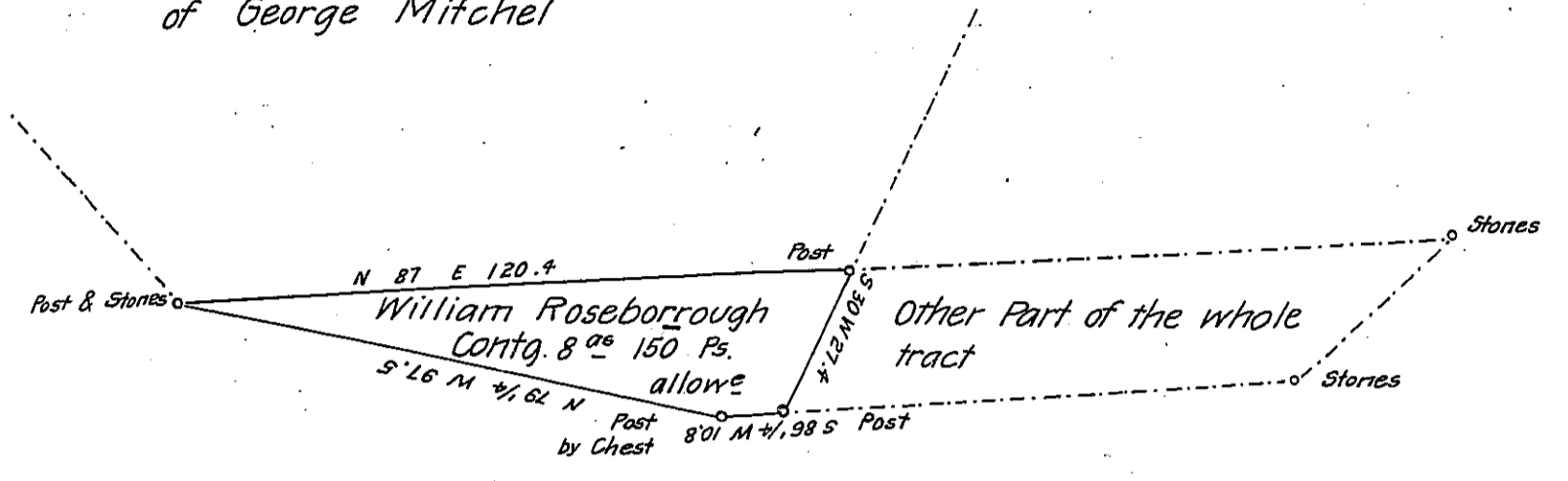


Henry Zigler's other Land in Right of George Mitchel



William McCelvey

A Draught of a tract of Land situate in Hopewell township York Co. Contg 8^{ac} & 150 prs & allowance being part of 28^{ac} 143 prs & allowance Surveyed on the 19th day of October A.D. 1801 by Jacob Spangler then D.S. for W^m Roseborough in persuarice of his warrant dated the 26th day of March 1800 And Resurveyed on the 9th day of March 1831 by John Becker Late D.S. and now on the first day of april A.D. 1841 Examined the above & make return thereof for Confirmation at the Request of Henry Zigler who desires to patent

To Jacob Sallade Esq.
Surveyor General.

Per
Samuel Ruby D.S.

IN TESTIMONY that the above is a copy of the original remaining on file in the Department of Internal Affairs of Pennsylvania, made conformably to an Act of Assembly approved the 16th day of February, 1833, I have hereunto set my Hand and caused the Seal of said Department to be affixed at Harrisburg, this twenty ninth day of March 1906

Isaac D. Brown
Secretary of Internal Affairs.